

# VISION

A community where people have wellness, acceptance and a sense of belonging.



# AMHS KFLA

**Addiction & Mental Health Services**  
Services de lutte contre les dépendances et de santé mentale  
KINGSTON FRONTENAC LENNOX & ADDINGTON

# AMHS KFLA

**Addiction & Mental Health Services**  
Services de lutte contre les dépendances et de santé mentale  
KINGSTON FRONTENAC LENNOX & ADDINGTON

Wellness | Acceptance | Belonging

## THE WAY FORWARD: STRATEGIC PLAN 2016



# MISSION

As a leading, transformative and collaborative organization, AMHS-KFLA's mission is to provide responsive, high-quality, community-based addiction and mental health services that empower the people it serves to be well and achieve their full potential.

Napanee    Kingston  
70 Dundas Street East    552 Princess Street  
Napanee, ON K7R 1H9    Kingston, ON K7L 1C7  
613.354.7521    613.544.1356

SUPPORTED BY:



Wellness | Acceptance | Belonging

[@amhskfla](https://twitter.com/amhskfla)  
[www.amhs-kfla.ca](http://www.amhs-kfla.ca) Coming Soon!

[www.amhs-kfla.ca](http://www.amhs-kfla.ca)

Just over one year ago, Addiction and Mental Health Services - Kingston Frontenac Lennox and Addington (AMHS-KFLA) was created through the South East Local Health Integration Network (SELHIN) facilitated amalgamation of Frontenac Community Mental Health and Addiction Services and Lennox and Addington Addiction and Community Mental Health Services. This amalgamation resulted in the creation of one of the largest community-based addiction and mental health organizations in the province. The amalgamation was only one part of a greater addiction and mental health redesign process which when completed will see AMHS-KFLA responsible for the funding and system performance for the majority of addiction and mental health services in KFLA. No small task.

In January of 2016, AMHS-KFLA began extensive consultations, both internally and externally, as part of our strategic planning process. From these consultations we heard loud and clear the need for greater leadership and increased integration and collaboration in all aspects of service design and delivery.

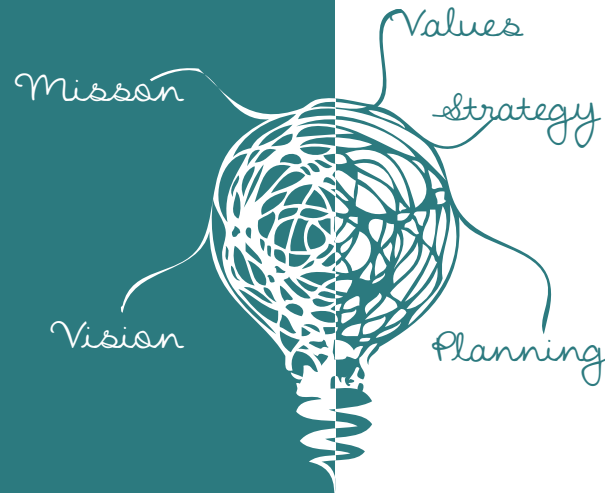
AMHS-KFLA is proud to present our founding vision, mission, organizational values and strategic directions. We look forward to the work ahead in collaboration with our clients and other partners in the creation of a strong and robust addiction and mental health system.



Bruce Griffith,  
Chair, AMHS-KFLA Board of Directors



Don Seymour,  
CEO, AMHS-KFLA



## VALUES

### Compassion

A welcoming and inclusive organization, we cultivate relationships with all stakeholders that encourage and promote recovery and wellness. We are universally positive in all our actions with individuals served and the community.

### Innovation

We seek to innovate in all we do. We will be socially entrepreneurial and create a culture of measured risk to achieve organizational and system sustainability.

### Excellence

We strive to provide accessible, flexible, integrated services in safe welcoming environments. We have a learning culture where initiative, innovation, and creativity are highly valued. The foundation of our services rests on excellence in all that we do.

### Accountability

We will act honestly and with integrity by taking responsibility for our own actions and by holding others responsible for theirs. We will ensure proper stewardship of the public resources placed in our trust.

## STRATEGIC DIRECTIONS

### Lead and support system change

- Embrace and create collaborations that lead to better outcomes for individuals and community
- Be generous with all resources
- Ensure alignment with best practices, funder goals and society trends

### Create the ideal individual experience

- People drive their services and determine their own recovery
- Service should be seamless in all stages of the recovery journey
- Services should be accessible, timely and responsive

### To be a transformational organization that proudly contributes to a responsive addiction and mental health support system

- A caring, confident and innovative workforce
- Create new sources of revenue to address service gaps and ensure service sustainability
- Passionate and articulate advocates